

Forcepoint Data Security Cloud

Uniting Visibility and Control for Seamless Data Security Everywhere

Challenge:

- › Data sprawl across cloud, endpoints, SaaS, and AI tools increases exposure and risk
- › AI-driven workflows move sensitive data faster than traditional controls can adapt
- › Rising compliance demands require unified protection across channels

Solution:

- › Unified, AI-powered platform delivering continuous visibility and control from a single control plane
- › Risk-adaptive enforcement that dynamically protects based on context and user behavior
- › Always-on AI expert that turns business and security priorities into protection

Outcome:

- › Secure innovation with confidence to use AI and safe collaboration
- › Faster policy deployment with reduced operational complexity
- › Executive visibility into data risk, performance and value realization

Self-aware data security for the AI era unites real-time visibility and adaptive control to protect sensitive data everywhere without slowing down your business.

Why Data Security Must Evolve

AI has permanently rewritten how data is created, shared and exposed.

Every prompt, automated decision and user interaction reshapes data risk in real time, often faster than traditional data security controls can detect or respond. Sensitive data now flows through AI-driven workflows, autonomous agents, cloud platforms and distributed users in ways that static, perimeter-based models were never designed to protect.

As AI accelerates the speed of work, data sprawl expands and the risk surface grows, while compliance and regulatory demands continue to rise.

Protecting data in this environment requires more than visibility. It requires a security approach that operates at the speed of AI, continuously understanding context, adapting enforcement, and protecting data wherever it is accessed or used.

Why the Stakes Are Higher Than Ever

Data loss is more frequent, more costly and more damaging to trust, and it does not always come from malicious attackers.

In an AI-driven world, a growing share of data exposure comes from well-intentioned employees simply trying to get work done. Sharing financial data ahead of earnings, collaborating on source code, or using AI tools to summarize or analyze sensitive information can introduce risk just as quickly as external threats.

Beyond direct financial impact, data loss erodes customer confidence, slows deals, increases regulatory scrutiny and drives higher cyber-insurance costs.

When data cannot be controlled as it moves through AI-driven workflows, organizations are forced to choose between slowing innovation or accepting unnecessary risk.

Data Security Everywhere Powered by the Forcepoint Data Security Cloud

It is more important than ever to stop risks to sensitive data before they turn into breaches. To achieve this, organizations need a platform designed to operate at the speed and scale of AI.

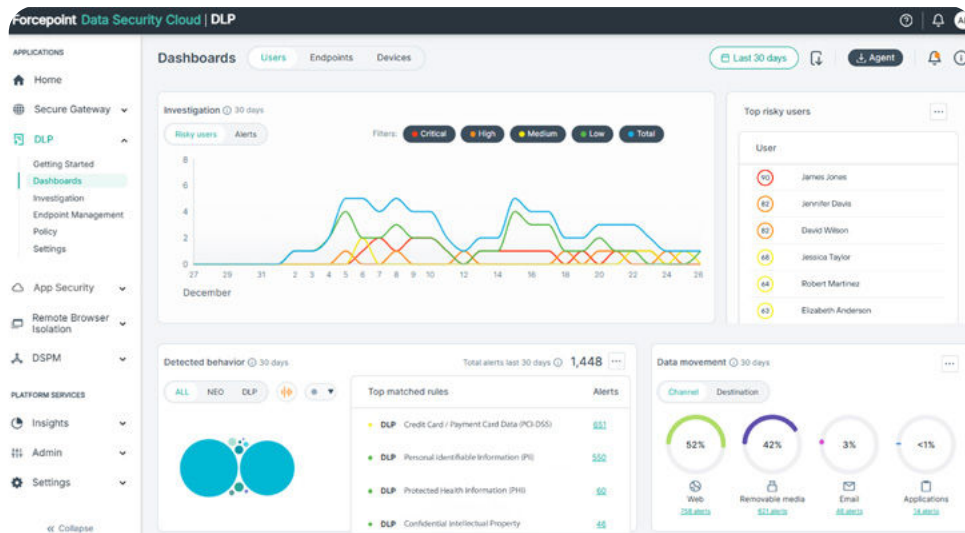
Forcepoint Data Security Cloud is an AI-powered, cloud-first platform that unites visibility and control of sensitive data to deliver Data Security Everywhere. Through advanced data discovery and classification, combined with a single policy framework across all major channels, it ensures consistent protection as data moves across users, applications, AI workflows, and environments.

The platform continuously monitors sensitive data in use, at rest and in motion, enabling organizations to detect risk, adapt enforcement and respond before exposure becomes a breach. Forcepoint also integrates advanced

threat protection to safeguard sensitive information and prevent malware from gaining control of critical data.

Unlike fragmented solutions that introduce gaps, redundancy, or limited channel coverage, Forcepoint unites high-speed discovery, AI-powered classification, prioritization and remediation with industry-leading data loss prevention from the endpoint to the cloud and everywhere in between.

At the core is Forcepoint AI Mesh, delivering high-accuracy classification and rich contextual understanding at a massive scale. Combined with risk-adaptive protection, enforcement automatically adjusts based on behavior, intent and risk, simplifying policy management while providing a complete view of dynamic data risk wherever data is accessed and used.



Built to Move at the Speed of AI

Data Protection in Seconds

An always-on integrated AI advisor helps set up and deploy the right data security policies in seconds using natural language, aligned to industry, region, and business priorities.

Tens of Millions of Files per Day

AI Mesh powered DSPM scans, discovers and classifies structured and unstructured data across cloud and on-prem data stores, reducing blind spots and providing visibility into data risk.

Unified Policy Enforcement

Apply data security policies to tens of thousands of users in minutes, not hours or days, and enforce consistently across endpoints, SaaS, email, web and AI workflows.

Focus on What Matters

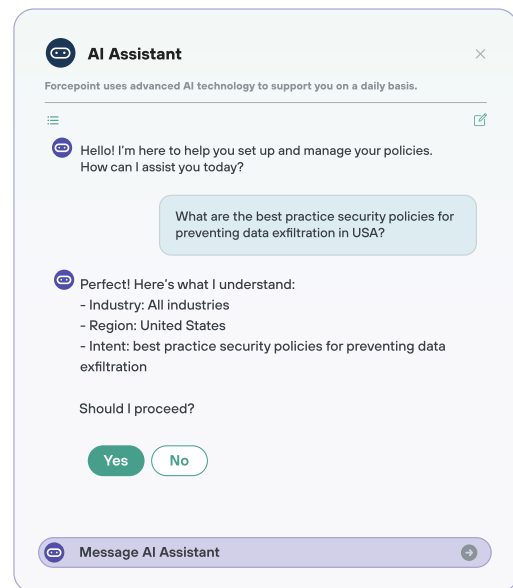
Continuously analyze user behavior, intent, and data sensitivity to adapt protection in real time. Prioritize high-risk activity, reduce noise, and surface actionable insights through a unified executive dashboard.

Always-On Security Expert

Forcepoint's integrated AI assistant ARIA provides continuous security guidance understanding natural language to recommend and deploy the right data protection policies.

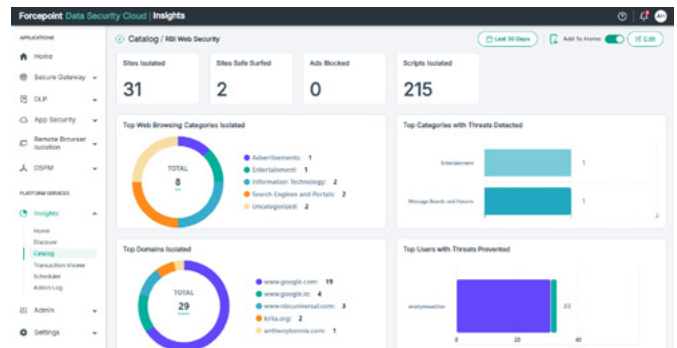
Teams can activate policies directly from the interface in seconds, aligned to industry, region, and business priorities, reducing setup from weeks to near immediate.

By translating business intent into enforceable controls, the assistant accelerates time to value, reduces operational complexity, and enables faster, more confident decisions.

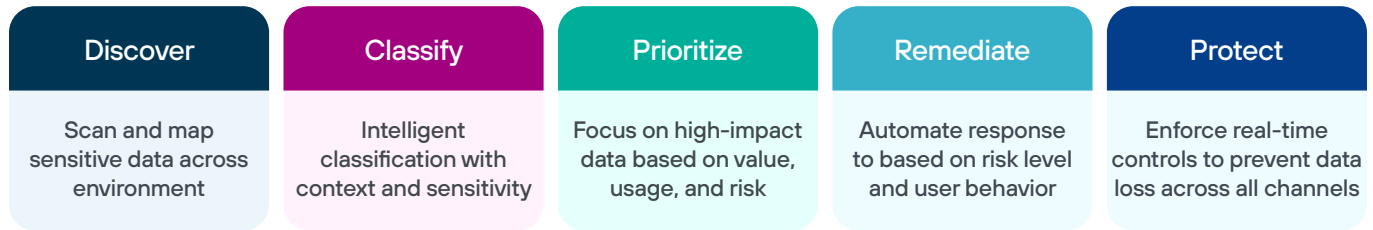


Executive Dashboard Insights

Built-in executive dashboards surface the most critical, actionable data risk insights and track cumulative trends over time. Scheduled email reports enable CISOs and security leaders to measure performance, demonstrate value and make faster, more confident decisions.



What Makes Forcepoint Different



A Modern, Continuous Data Security Approach

Traditional data security relies on static controls and point-in-time assessments. Forcepoint takes a modern approach designed for how work happens today, with data everywhere and users operating across cloud, AI, and distributed environments.

Forcepoint Data Security Cloud continuously discovers, classifies, prioritizes, remediates and protects sensitive data across all channels. These capabilities operate as a continuous loop, adapting in real time as data moves, users interact and risk evolves.

This approach enables organizations to understand where sensitive data lives, focus on what matters most, automate response based on risk and behavior and enforce adaptive controls that prevent data loss without slowing the business.

Together, Forcepoint helps organizations understand their data risk, dynamically adapt protection and simplify security operations across cloud, on-prem, and AI-driven workflows.

